



DANISH DESIGN &  
QUALITY  
SINCE 1979





## ecoLine

As Lotus embarks on its green transition, we are proud to introduce the ecoline version for several of our esteemed product families: the M- and Maestro-series, Jubilee 25 and 35, the H570, and our latest model, the Orbis. This initiative is a testament to our commitment to eco-friendliness and environmental responsibility. The development of ecoline is motivated by our strategy, "The New Path."

**The ecoline series is designed with two primary objectives in mind:**

1. **Improving Efficiency**
2. **Reducing Emissions**

To enhance **efficiency**, we have optimized the combustion chamber and the heat exchange process. This innovative approach ensures that energy from the wood is used more effectively, reducing consumption and improving overall performance and heat generation.

In terms of **emissions reduction**, we optimized the air supply and distribution in the combustion chamber and implemented the catalyst technology. This catalyst facilitates an additional chemical reaction with oxygen, resulting in an afterburn effect. This secondary combustion process significantly lowers emission levels by converting harmful substances into safer compounds.

Lotus is among the pioneers in introducing this advanced method to the European market, meeting and exceeding the growing demand for environmentally responsible solutions. Our ecoline series represents a significant step forward in our journey towards a greener future, setting new standards in the market.



Orbis 1



Orbis 2, Soapstone



### Orbis 1 ecoLine

PRODOTTO 5 STELLE



**KG** 142 kg

**I** 1087,5 mm

**Ø** 465 mm

**I** 1065 mm

**🔥** 5 kW



### Orbis 2 ecoLine

PRODOTTO 5 STELLE



**KG** 152 kg

**I** 1287,5 mm

**Ø** 465 mm

**I** 1065 mm

**🔥** 5 kW



### Orbis 3 ecoLine

PRODOTTO 5 STELLE



**KG** 159 kg

**I** 1487,5 mm

**Ø** 465 mm

**I** 1065 mm

**🔥** 5kW

## Orbis serie

Introducing the Orbis, the latest addition to our collection of wood-burning stoves. True to its Latin name, the Orbis features a completely round design, offering a modern aesthetic that stands out in any home.

The Orbis is available in a variety of finishes, including Soapstone, Indian Night, and Coffee Stone, allowing you to customize it to perfectly match your interior decor.

### Variations



Steel



Soapstone



Indian Night



Coffee Stone

# Jubilee 25



---

## THE JUBILEE SERIES:

Now Featuring **Cast Iron Door** and **Cast Iron Top Plate**



Classic



Modern



Shape



Jubilee 25



Soapstone



Indian Night



Limestone

### Jubilee 25 **ecoLine**

PRODOTTO 5 STELLE



**KG** 165-235 kg

**I** 1094 mm

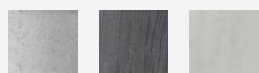
**H** 626 mm

**W** 400 mm

**I** 932/1220 mm

**W** 7 kW

# Jubilee 25M



Jubilee 25M **ecoLine**

PRODOTTO 5 STELLE



**KG** 335 kg

**I** 1420 mm

**H** 626 mm

**W** 400 mm

**I** 932/1220 mm

**W** 7,1 kW







# Optimized Combustion and Catalytic Technology in Lotus ecoLine

The ecoLine stoves works with an optimized combustion chamber and at flue gas treatment system with catalytic secondary combustion function.

The catalyst in ecoLine is specifically designed type for small combustion systems like wood stoves and fireplace inserts and is uniquely designed for the optimal function in each Lotus stove, effectively reducing pollutants in flue gases. It has a catalyst carrier providing a large catalytic active surface area for optimal performance.

Installed in the optimal position at the top of the combustion chamber, it promotes the oxidation of harmful components such as CO and VOC's into CO<sub>2</sub>. By lowering the energy required for these reactions, the catalyst accelerates the process, keeping emissions well below regulatory limits while enhancing efficiency and sustainability.

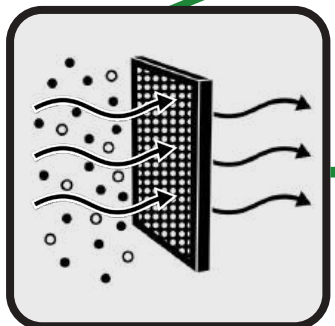
- Optimized Combustion



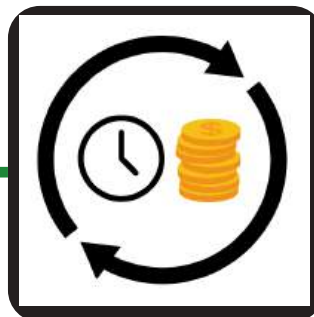
- Catalytic Technology



- Minimization of Emissions



- Long-Term Cost Efficiency

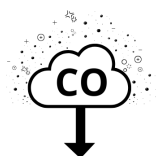


**AND DISCOVER WHY THE ECOLINE SERIES IS THE SMART CHOICE FOR YOUR HOME.**



**ECO-FRIENDLY &  
FUTURE-READY**

ecoLine stoves are designed to meet and exceed the strictest current emission standards and are ready for even tougher demands. By investing in this technology, you ensure that your stove remains compliant for years to come, helping you reduce your carbon footprint while enjoying a greener home.



**REDUCED CO, OGC &  
DUST EMISSIONS**

With advanced catalyst technology, ecoLine stoves drastically reduce harmful emissions from carbon monoxide (CO) and carbon hydrogen compounds (OGC). The improved combustion chamber ensures a very efficient fire reducing the particulate fine dust, providing cleaner flue gas from your stove and contributing to a healthier environment. This also helps ensure compliance with future regulations, protecting your investment.



**SUPERIOR EFFICIENCY,  
LESS FIREWOOD**

The optimized combustion system of the ecoLine stoves ensures you use significantly less wood, saving you money on fuel in the long run.

The improved heat exchange provides more warmth from fewer logs, giving you both comfort and cost-efficiency.



**DURABLE, HIGH-TEMPERA-  
TURE PERFORMANCE**

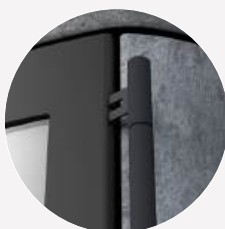
The ecoline's integrated flue gas treatment operates effectively at temperatures up to 800°C, ensuring long-lasting performance. The simple design of the system makes it very easy to maintain and this means fewer replacements and maintenance costs, making it a smart investment over time.

# Jubilee 35



## THE JUBILEE SERIES:

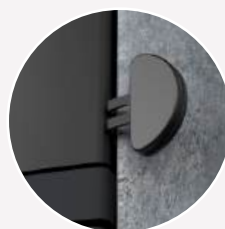
Now Featuring **Cast Iron Door** and **Cast Iron Top Plate**



Classic



Modern



Shape



Jubilee 35 **ecoLine**



Steel



Indian Night



Limestone

PRODOTTO 5 STELLE



**KG** 192-243 kg

**I** 1092-1102 mm

**H** 725 mm

**W** 455 mm

**I** 932 mm

**🔥** 7 kW

# Jubilee 35M

Jubilee 35M **ecoLine**

PRODOTTO 5 STELLE



**KG** 358 kg

**I** 1420 mm

**H** 725 mm

**L** 455 mm

**I** 1222 mm

**W** 7 kW





Soapstone



Indian Night



Limestone

# M Serie







M1 **ecoLine**  
 PRODOTTO 5 STELLE  
 A+ ★★★★★

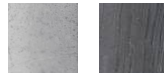
**KG** 435 kg

**I** 1143 mm

∅ 560 mm

**I** 938 mm

**🔥** 5,5 kW



M2 **ecoLine**  
 PRODOTTO 5 STELLE  
 A+ ★★★★★

**KG** 545 kg

**I** 1453 mm

∅ 560 mm

**I** 938 / 1248 mm

**🔥** 5,5 kW



M3 **ecoLine**  
 PRODOTTO 5 STELLE  
 A+ ★★★★★

**KG** 655 kg

**I** 1763 mm

∅ 560 mm

**I** 938 / 1248 / 1558 mm

**🔥** 5,5 kW

## ADDITIONAL ELEMENTS



Turning plate



Baking section



## Maestro



Maestro 2 grey with baking section

The Lotus Maestro 3 is a powerhouse of heat. Weighing up to 672 kg, it delivers excellent heat retention and serves as a beautiful centrepiece in any room. With space for 109 kg of PowerStones, it ensures that your home remains warm even after the fire has burned out.

### ADDITIONAL ELEMENTS



Turning plate



Baking section



## Maestro 1 ecoLine

PRODOTTO 5 STELLE



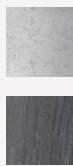
**KG** 420 kg

**I** 1233 mm

**Ø** 560 mm

**I** 1038 mm

**🔥** 6 kW



## Maestro 2 ecoLine

PRODOTTO 5 STELLE



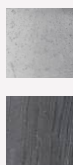
**KG** 530 kg

**I** 1543 mm

**Ø** 560 mm

**I** 1038 / 1348 mm

**🔥** 6 kW



## Maestro 3 ecoLine

PRODOTTO 5 STELLE



**KG** 672 kg

**I** 1853 mm

**Ø** 560 mm

**I** 1038 / 1348 / mm

**🔥** 6,7 kW

# H570

## DESIGN YOUR H570 IN BLACK, GREY OR MAGIC

Create your own insert. Choose between different handles and find the colour that perfectly matches your style and home.



Grey



Black



Magic





Modern Grey H



Modern Black H



Classic H



Classic Grey H




Classic Black H


## H570 **ecoLine**


PRODOTTO 5 STELLE




 **111 kg**

 **654 mm**

 **756 mm**

 **440 mm**

 **66 cm**

 **6 kW**





# EcoDesign

The Eco Design directive is the EU legislation focused on enhancing energy efficiency and reducing CO<sub>2</sub> emissions, with regulations for energy-consuming products. For wood-burning stoves taking effect on January 1, 2022. At Lotus, we ensure all our stoves meet the Eco Design demands through rigorous testing with recognized methods and 3rd party approvals, proudly exceeding the EU's emission requirements.

We are dedicated to delivering stoves that feature the latest technology, exceptional design, and high efficiency while prioritizing environmental responsibility.

The official approval of a stove is environmentally evaluated by 5 indicators which have minimum criteria.

## Description of values

	 EcoDesign 2022	 ecoLine
<p><b><u>Efficiency</u></b></p> <p>It is determined by the cooling of the smoke before it exits the chimney</p>	>75%	87%*
<p><b><u>CO</u></b></p> <p>It is a colorless, odorless gas that is produced when carbon-based fuels, like wood, do not burn completely. Using your wood-burning stove correctly and ensuring good ventilation will help maintain a safe and enjoyable experience.</p>	<1500	239*
<p><b><u>OGC</u></b></p> <p>Organic Gaseous Compounds, are airborne particles created by atmospheric reactions that can affect air quality. Using efficient and well-maintained wood-burning stoves can help minimize their impact.</p>	<120	31*
<p><b><u>NOx</u></b></p> <p>These compounds released into the air during combustion processes. Opting for a high-quality, efficient wood-burning stove helps reduce their production and improve the overall performance of your stove.</p>	<200	92*
<p><b><u>PP</u></b></p> <p>Also known as dust, consists of tiny solid or liquid particles released into the air from various sources like construction and natural events. Choosing a well-designed wood-burning stove can help ensure cleaner</p>	<40	11*

*\*figures are the average value of the ecoLine series*

# Key Values of Our ecoLine Series Selection



	Orbis	M	Jubilee 25/M	Jubilee 35	Maestro 1, 2	Maestro 3	H570
Eff. %	88	86	85	85	88	88	86
Co (mg/ m3)	345	213	381	188	372	176	129
OGC(MG/ M3)	27	26	29	22	34	29	31
Nox (mg/ m3)	76	87	100	98	98	89	91
DUST	10	12	15	11	10	8	12

*\*The figures have been certified by a 3rd party approvals*

Find out more of the ecoLine families on [www.lotusstoves.com](http://www.lotusstoves.com)



Se alle ovne her



Dette katalog er også miljøbevidst.  
Trykt på FSC®-certificeret papir.